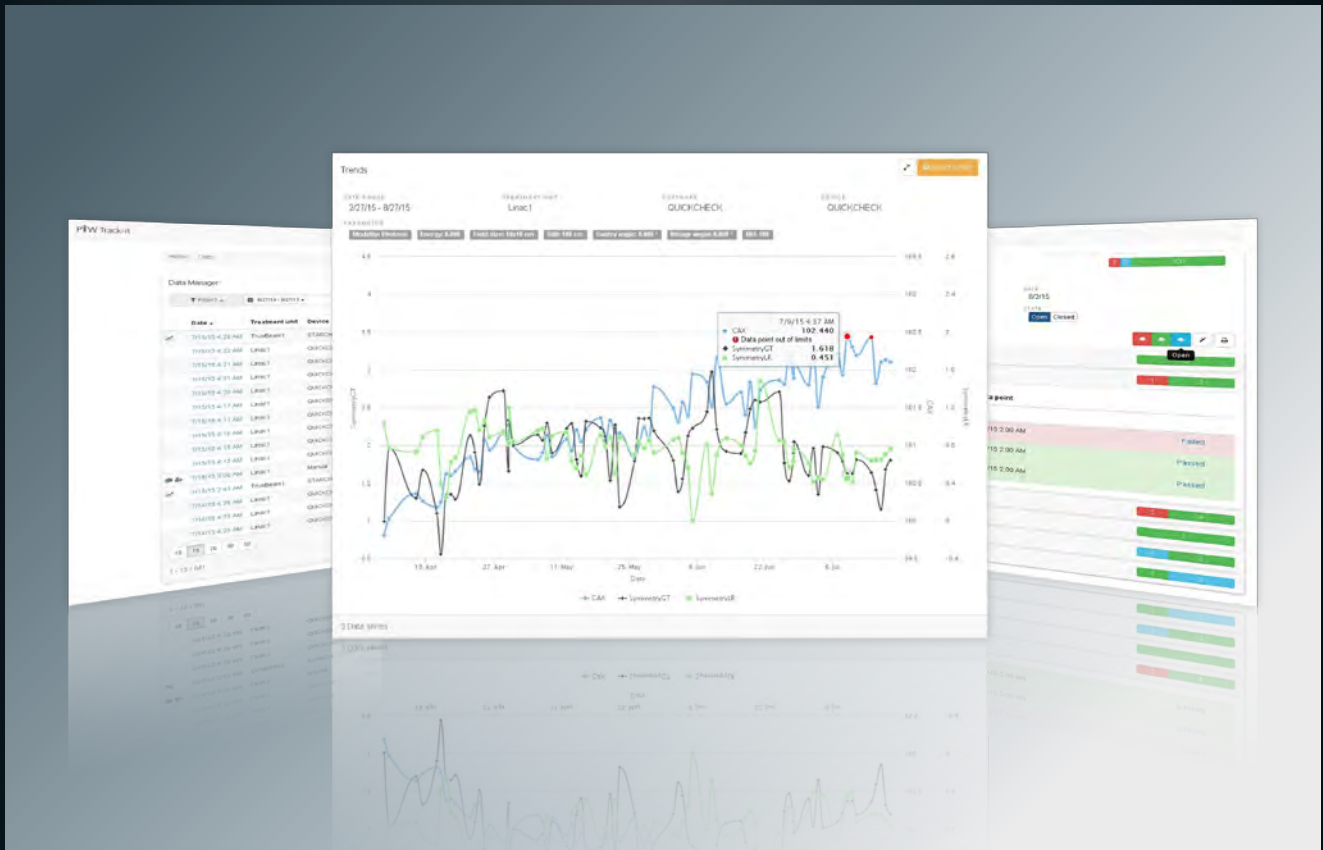


A hand is pointing at a screen that displays a blurred background of data charts, including a bar chart and a line graph. The text 'PTW Track-it' is overlaid on the screen. The 'PTW' is in white, and 'Track-it' is in red. Below the main title, the text 'QA Data at Your Fingertips' is written in white.

PTW Track-it

QA Data at Your Fingertips



Effectively monitor QA data from multiple sources, devices or sites. Anytime. Anywhere. Your Way.

Track-it QA Data Management

- ▶ Track and manage all of your QA data efficiently on one single platform and share it within your organization.
- ▶ Export analyzed QA data from your PTW QA device to Track-it with the click of a single button. Add custom data manually or import external QA data via open XML interface – whenever you need it.
- ▶ Easily access your data from any network device simply by using a standard web browser, e.g., Chrome™, Firefox®, Internet Explorer® or Safari®.
- ▶ Effectively monitor and document your QA tasks as required by standard guidelines, e.g., AAPM TG-142 or DIN, using customizable protocol templates and smart Autofill functions.

PTW Track-it Trends Data Protocols en

Home Data

Data Manager Show data types Show parameters

Filter 1 8/27/14 - 8/27/15

Date	Treatment unit	Device	Software	Modality	Energy	Field size	CAX	Flatness	CAXDoseDeviation	SymmetryGT
7/15/15 4:28 AM	TrueBeam1	STARCHECKmaxi	MultiCheck 3.6	Photons	10.000	10x10 cm				1.290 %
7/15/15 4:22 AM	Linac1	QUICKCHECK	QUICKCHECK	Photons	6.000	20x20 cm	101.890	0.853		1.166
7/15/15 4:21 AM	Linac1	QUICKCHECK	QUICKCHECK	Photons	15.000	20x20 cm	101.500	0.911		1.457
7/15/15 4:21 AM	Linac1	QUICKCHECK	QUICKCHECK	Photons	15.000	10x10 cm	101.520	0.946		2.324
7/15/15 4:20 AM	Linac1	QUICKCHECK	QUICKCHECK	Photons	6.000	10x10 cm	101.820	1.006		1.408
7/15/15 4:17 AM	Linac1	QUICKCHECK	QUICKCHECK	Electrons	18.000	20x20 cm	100.720	0.932		0.962
7/15/15 4:17 AM	Linac1	QUICKCHECK	QUICKCHECK	Electrons	15.000	20x20 cm	100.590	0.912		1.049
7/15/15 4:16 AM	Linac1	QUICKCHECK	QUICKCHECK	Electrons	12.000	20x20 cm	100.650	0.977		0.895
7/15/15 4:15 AM	Linac1	QUICKCHECK	QUICKCHECK	Electrons	9.000	20x20 cm	100.740	1.048		0.963
7/15/15 4:15 AM	Linac1	QUICKCHECK	QUICKCHECK	Electrons	6.000	20x20 cm	100.830	1.015		1.101
7/15/15 3:00 AM	Linac1	Manual	not found							
7/15/15 2:49 AM	TrueBeam1	STARCHECKmaxi	MultiCheck 3.6	Photons	6.000	10x10 cm				1.112 %
7/14/15 4:26 AM	Linac1	QUICKCHECK	QUICKCHECK	Photons	6.000	20x20 cm	102.490	0.854		1.338
7/14/15 4:26 AM	Linac1	QUICKCHECK	QUICKCHECK	Photons	15.000	20x20 cm	102.060	0.933		1.872
7/14/15 4:25 AM	Linac1	QUICKCHECK	QUICKCHECK	Photons	15.000	10x10 cm	102.150	0.955		3.013

10 15 20 30 50 first previous 1 2 3 4 5 next last

1 - 15 / 641 Add

Efficiently manage all QA data on one single platform.

Track-it Data Manager

- ▶ Quickly access, browse and view QA data from any data source and from anywhere in your network.
- ▶ Customize filters to restrict data selection and save your filters for future use.
- ▶ Personalize your data view by adding and/or removing parameters or data types to see only the data that interests you, conveniently on one screen.
- ▶ Click a specific measurement for more detailed information, e.g., related data points, measurement conditions or interactive mini charts that give you a quick overview of trends.
- ▶ Immediately spot deviations of selected data types, e.g., CAX or symmetry.
- ▶ Add and/or edit data manually.



Easily track changes over time to take action when needed.

Track-it Trend Viewer

- ▶ Show trends of selected data types to recognize outliers and deviations from previously defined limits more easily.
- ▶ Restrict data for chart display using custom filters.
- ▶ Zoom in on any section of the chart to see the data trend over a shorter period of time.
- ▶ Move the mouse over single data points in your trend graph to view measurement results and/or further details.
- ▶ Edit and/or add comments to single data points.

Protocol document

PROTOCOL
TG142-Daily
TREATMENT UNIT
Linac1

TEST FREQUENCY
Daily

COMMENT

DATE
6/2/15

STATE

1 4 23

> Dosimetry | 13 Tasks

▼ Mechanical | 3 Tasks

Task	Linked data type	Data point	
Laser localization	Laser localization	6/2/15 2:00 AM	Failed
Distance indicator (ODI)	Distance indicator (ODI)	6/2/15 2:00 AM	Passed
Collimator size indicator	Collimator size indicator	6/2/15 2:00 AM	Passed

> Safety | 6 Tasks

> Dynamic/universal/virtual wedges | 1 Tasks

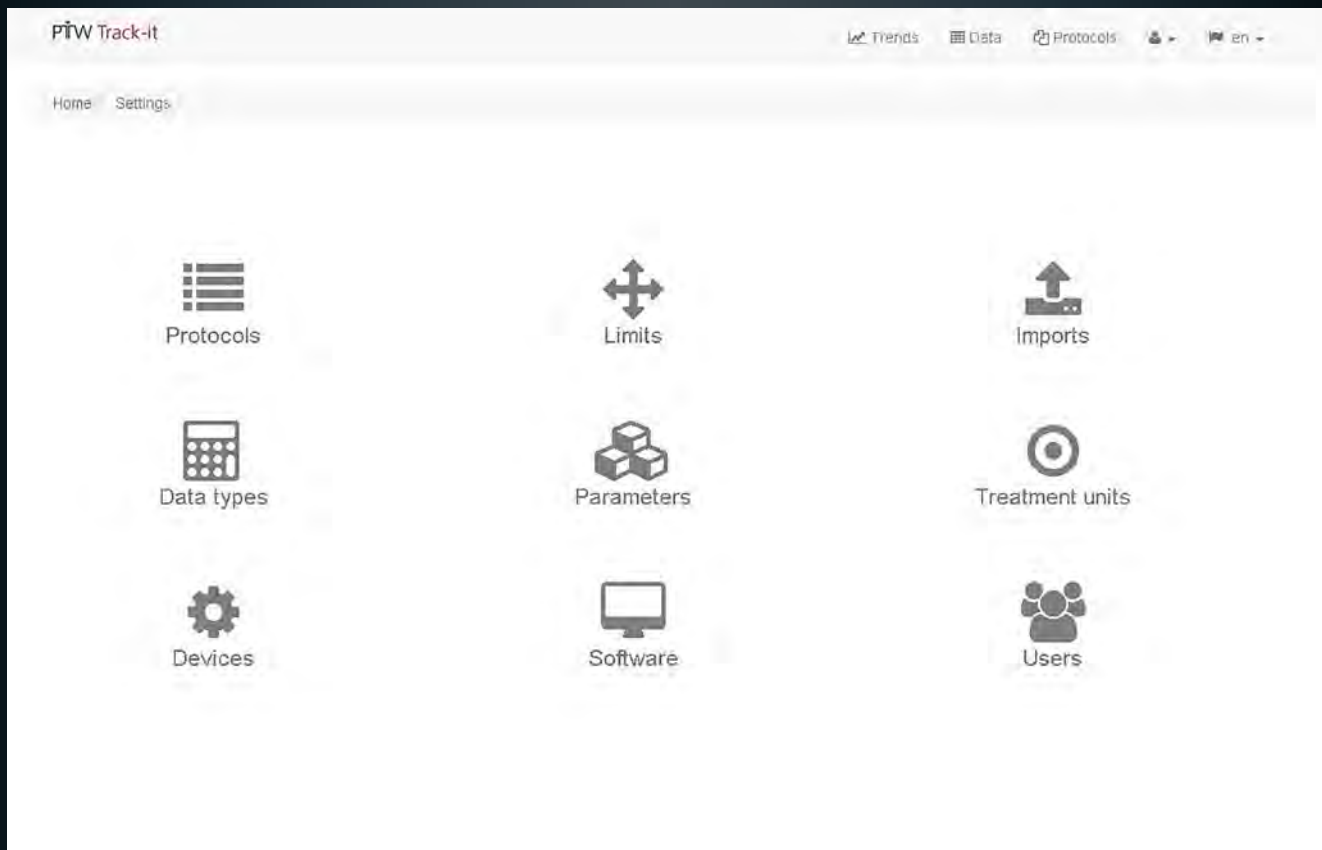
> Planar kV and MV (EPID) imaging | 3 Tasks

> Cone-beam CT (kV and MV) | 3 Tasks

Conveniently monitor your QA tasks and document their results as required, in less time.

Track-it Protocol Manager

- ▶ Track the current status of your QA tasks (completed or open, pass or fail) from anywhere in your network.
- ▶ Use predefined or custom protocol templates, e.g., for AAPM TG-142 or DIN, to quickly collect the QA data you need.
- ▶ Save time by filling and/or updating your selected protocol automatically with the required QA data using Track-it Autofill.
- ▶ Add and/or edit data manually and save it in the Track-it database.
- ▶ Document results and print them for sign-off using preconfigured reports.
- ▶ Access tips and/or guidance on how to perform a specific test via the Info icon.
- ▶ Automatically archive completed protocols and retrieve saved documents any time you need them.



Customize Track-it to your specific needs.

Track-it Settings

- ▶ Edit and/or create your own protocol templates to perfectly meet your facility's requirements.
- ▶ Edit imported limits and/or define new limits to facilitate trend analysis.
- ▶ Add and/or edit data types or parameters when needed.
- ▶ Add users and manage their access rights.
- ▶ Keep track of data imports and the latest database updates.

Track-it

QA Data Management Software

Tracking. Trending. Reporting.
Anytime. Anywhere. Your way.

Minimum System Requirements

Server:

Operating System: Windows® 7, Windows® 8,
Windows® Server 2008 / 2008 R2 (SP1) or higher,
.NET Framework 4.5.1 or higher

RAM: 8 GB

Hard Disk: 250 MB

Client:

Supported Devices: Any PC and/or mobile device
Tablet PCs with 10", full HD,
resolution 1920 x 1080 or higher

Supported Browsers: Internet Explorer® 11, Mozilla® Firefox® 37,
Google Chrome™ 42, Apple® Safari® 8.0

Headquarters

PTW-Freiburg
Physikalisch-Technische
Werkstätten
Dr. Pychlau GmbH
Tel. +49 761 49055-0
info@ptw.de
www.ptw.de

PTW-UK Ltd.
Tel. +44 1476 577503
sales@ptw-uk.com
www.ptw-uk.com

PTW-France SARL
Tel. +33 1 64 49 98 58
info@ptw-france.com
www.ptw-france.com

PTW-Asia Pacific Ltd.
Tel. +852 2369 9234
info@ptw-asiapacific.com
www.ptw-asiapacific.com

PTW Dosimetry India Pvt. Ltd.
Tel. +91 44 42079999
info@ptw-india.in
www.ptw-india.in

PTW Dosimetría Iberia S. L.
Tel. +34 96 346 2854
info@ptwdi.es
www.ptwdi.es

PTW-New York Corporation
Tel. (1-516) 827 3181
ptw@ptwny.com
www.ptwny.com

PTW-Latin America
Tel. +55 21 2178 2188
info@ptw.com.br
www.ptw.com.br

PTW-Beijing Ltd
Tel. +86 10 6443 0746
info@ptw-beijing.com
www.ptw-beijing.com